


## SAP -HANA -ODBC CONNECTION

SAP HANA provides a driver for connecting applications to the database with ODBC.”.

Download the media from service market place, Need SMP credentials

**SAP HANA CLIENT 1.00 -> Windows on x64 64bit**

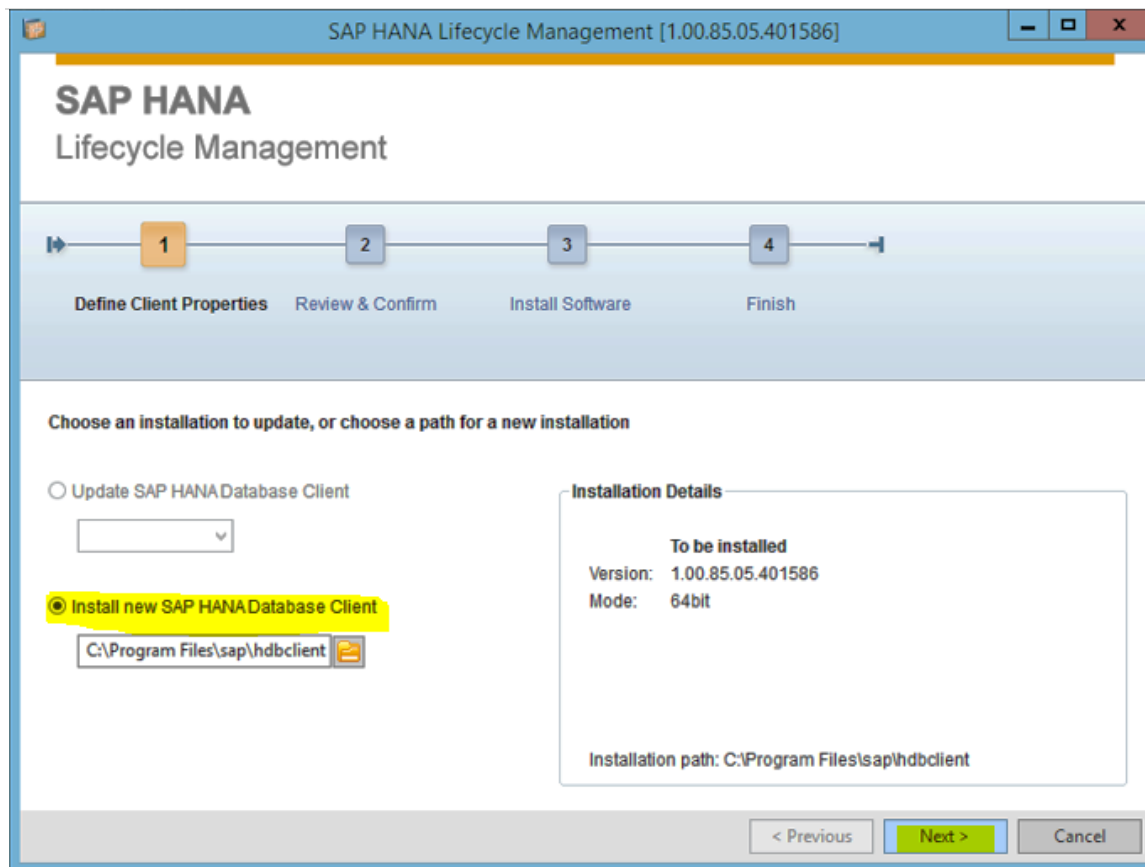
Select one or more files and click "Add to download basket". We recommend that you use the [SAP Download Manager](#) especially when downloading large files or to schedule downloads to run at a later point in time.  
Get more information about [multispanning and how to extract multi-part archives](#) . Click on  to request a [Side effects report](#) .

The following objects are available for download:

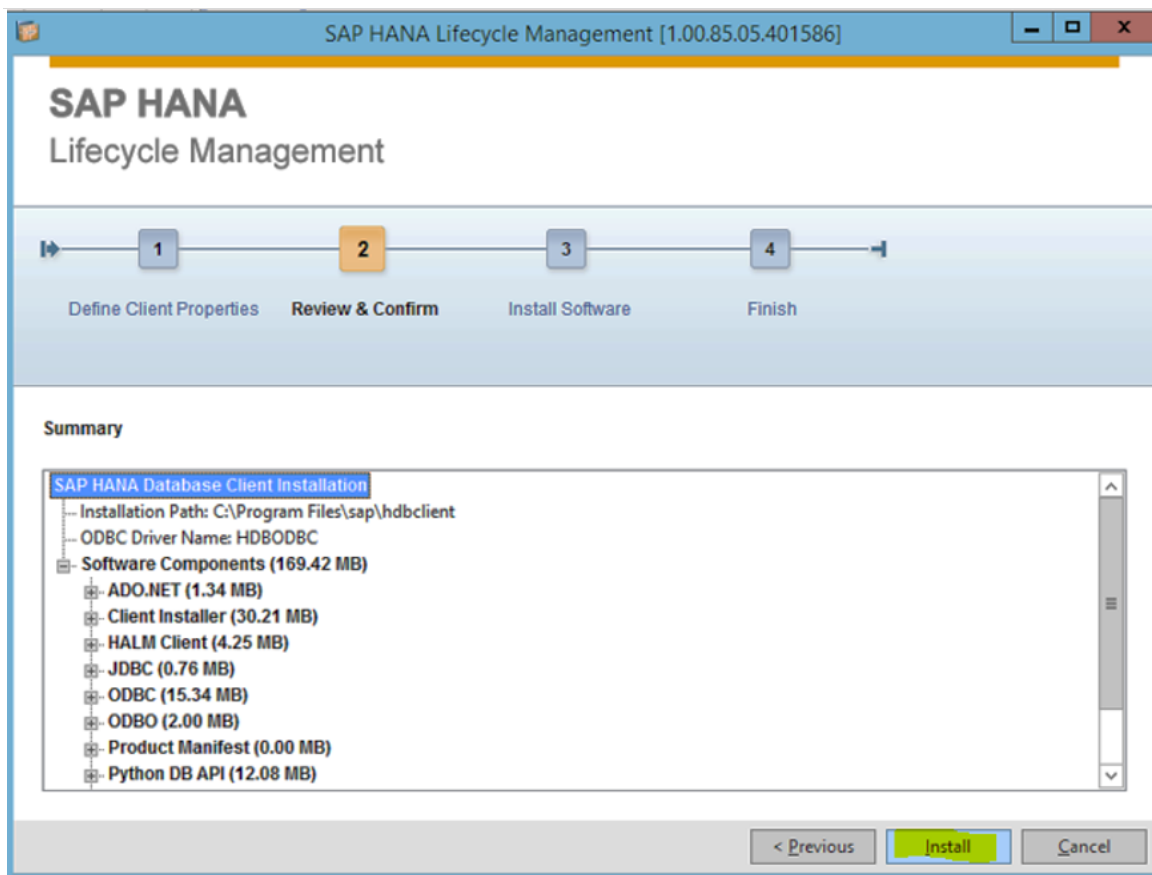
|                                     | File Type | Download Object                                   | Title   | Patch Level | Info File            | File Size [kb] | Last Changed |
|-------------------------------------|-----------|---|---|-------------|----------------------|----------------|--------------|
| <input type="checkbox"/>            | SAR       | <a href="#">IMDB_CLIENT100_102_0-10009664.SAR</a> | Revision 102 for SAP HANA CLIENT 1.00               | 0           | <a href="#">Info</a> | 62912          | 12.09.2015   |
| <input checked="" type="checkbox"/> | SAR       | <a href="#">IMDB_CLIENT100_85_5-10009664.SAR</a>  | Maintenance Revision 85.05 for SAP HANA CLIENT 1.00 | 5           | <a href="#">Info</a> | 76910          | 28.07.2015   |
| <input type="checkbox"/>            | SAR       | <a href="#">IMDB_CLIENT100_97_2-10009664.SAR</a>  | Revision for SAP HANA CLIENT 1.00                   | 2           | <a href="#">Info</a> | 67903          | 01.09.2015   |

When you install the SAP HANA client software package, supported clients are installed and available. The clients available on Microsoft Windows platforms are as follows:

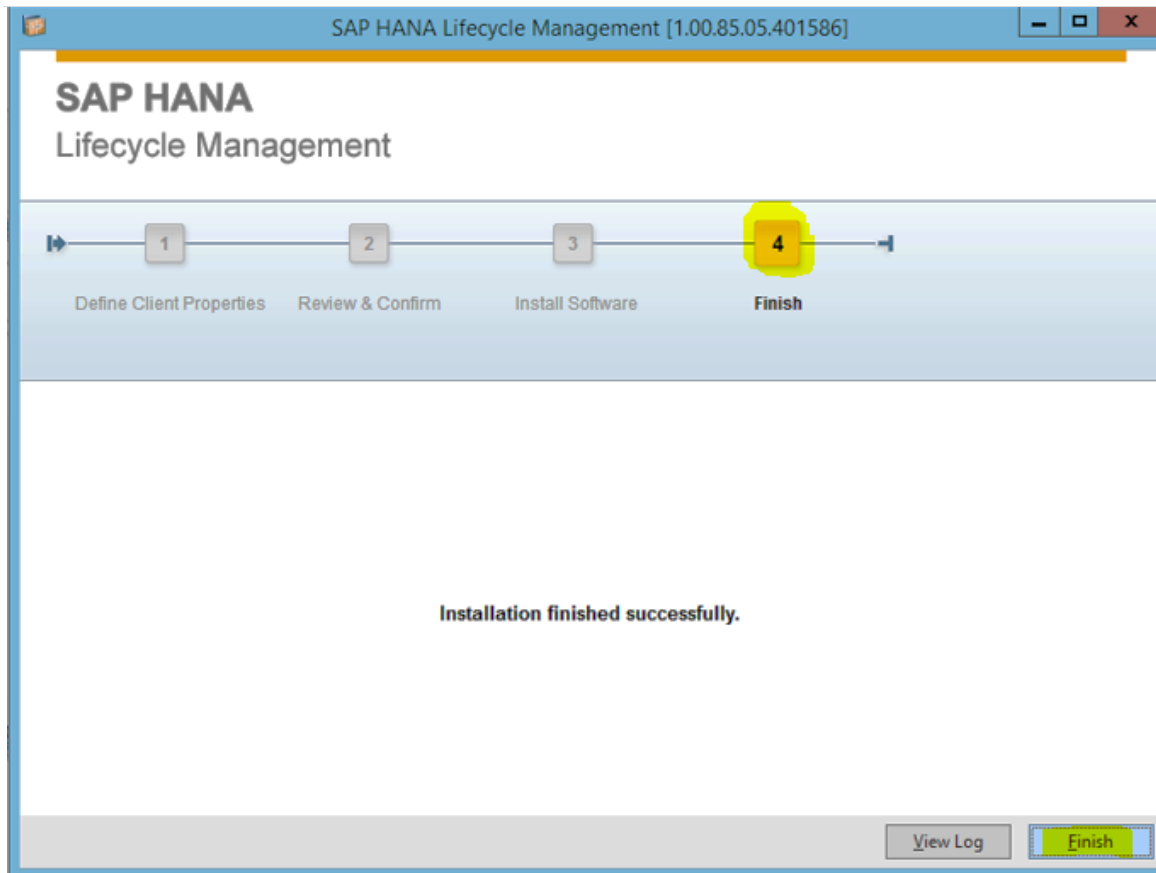
- SQLDBC
- ODBO
- ODBC
- JDBC
- Microsoft ADO.NET



Confirm the standard options and go through the short installation procedure: (Install HDBODBC (64 bit machine) & HDBODBC32(32 bit Machine))



Click on Install



After installing SAP HANA Client and SAP HANA Studio, we can start HANA Studio by navigating to the Windows Start menu, go to "All Programs type SAP HANA and hit "SAP HANA Studio":

Installation completed successfully.

## 1) Install 32 ODBC Drivers for SAP-HANA

After you install the necessary components, you must create an ODBC data source for each SAP HANA database to which you want to connect. A data source contains connection credentials that you need to locate and access the database, such as database name, user name, and database password. When you create an ODBC data source, you must also specify the driver to which the ODBC driver manager sends database calls. The ODBC driver varies based on the operating system platform.

The following table lists the SAP HANA ODBC driver for different platforms:

Platform SAP HANA ODBC Driver

32-bit Windows HDBODBC32

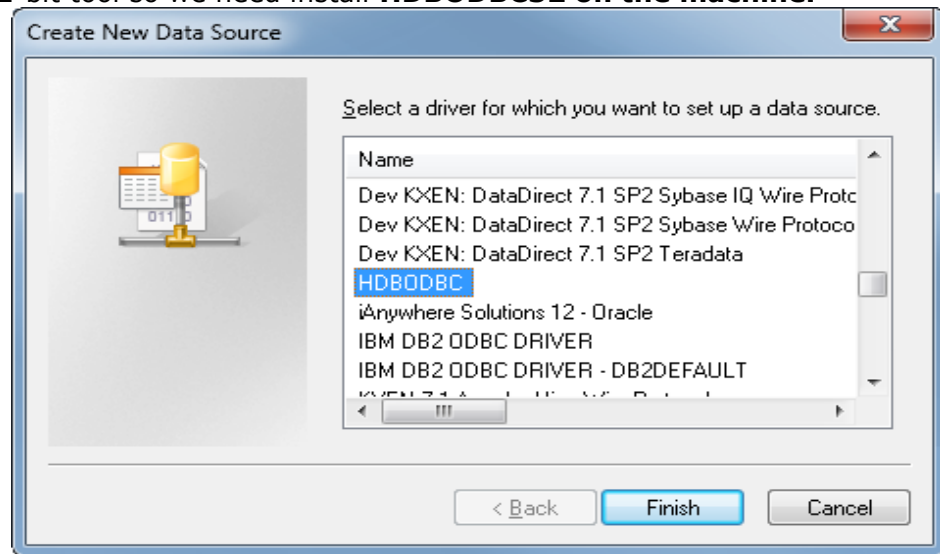
64-bit Windows HDBODBC

But as MyReport is 32-bit tool. So, we need to install HDBODBC32 Drivers.

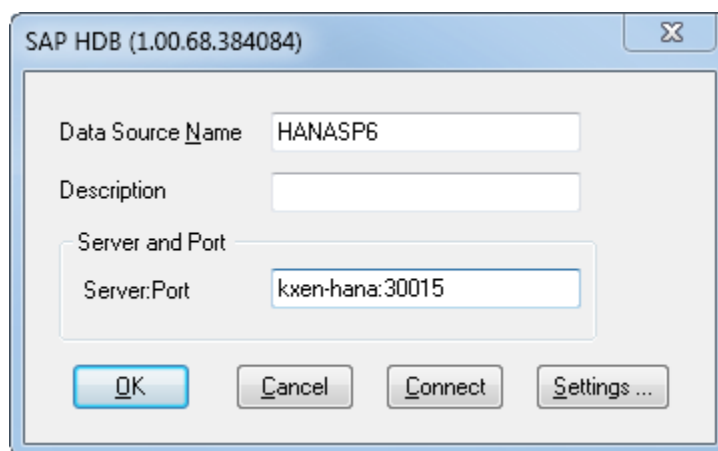
After installing HDBODBC32 drivers on your machine you can able to access from USER DSN

- 2) Open MyReport Data - ODBC Administrator or Click Start > **Control Panel > Administrative Tools > Data Sources (ODBC)** to open the **ODBC Data Source Administrator**.
- 3) Select the SAP HANA ODBC driver (**HDBODBC (64 bit machine)** or **HDBODBC32(32 bit)**).

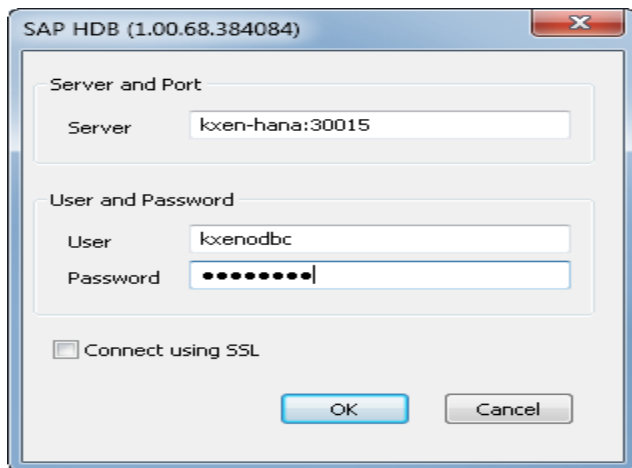
As MyReport is 32-bit tool so we need install **HDBODBC32 on the machine.**



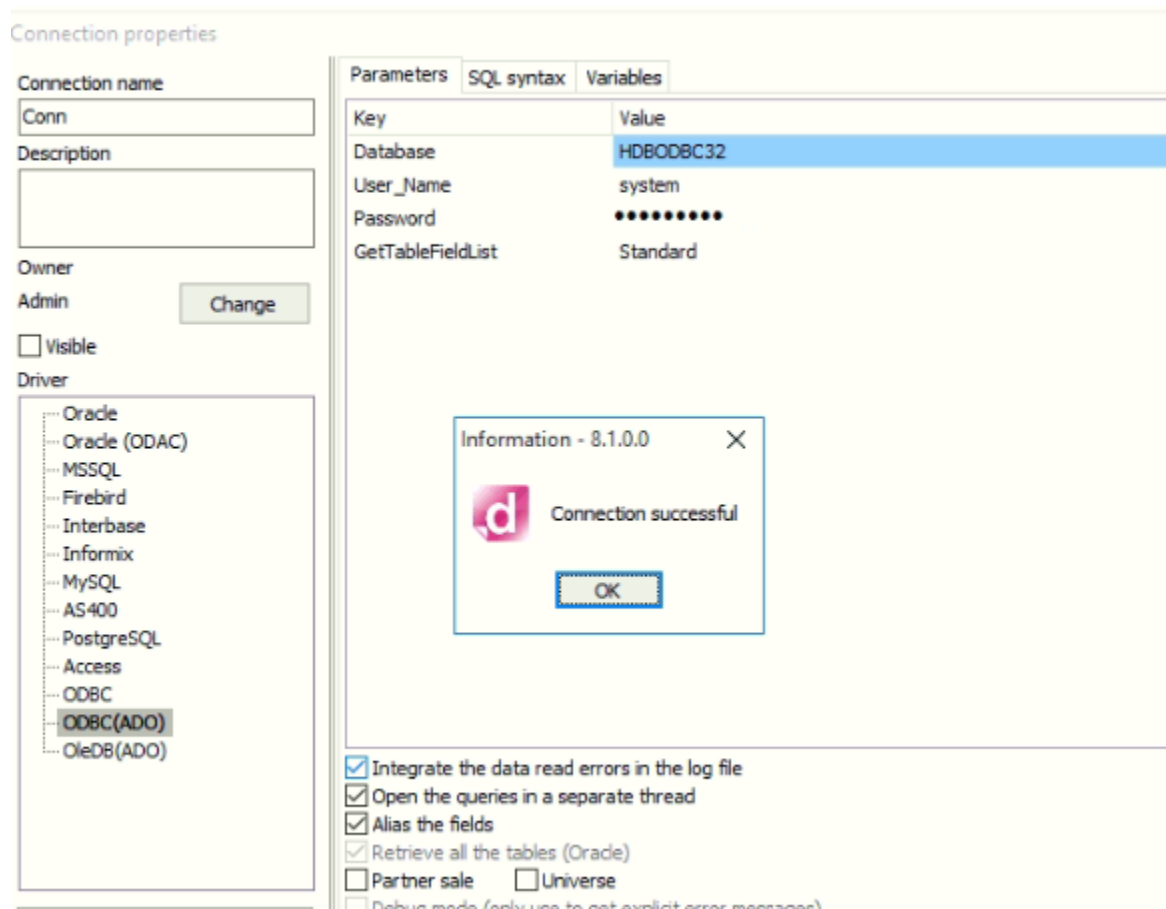
- 4) Provide the credentials Source Name , Port.




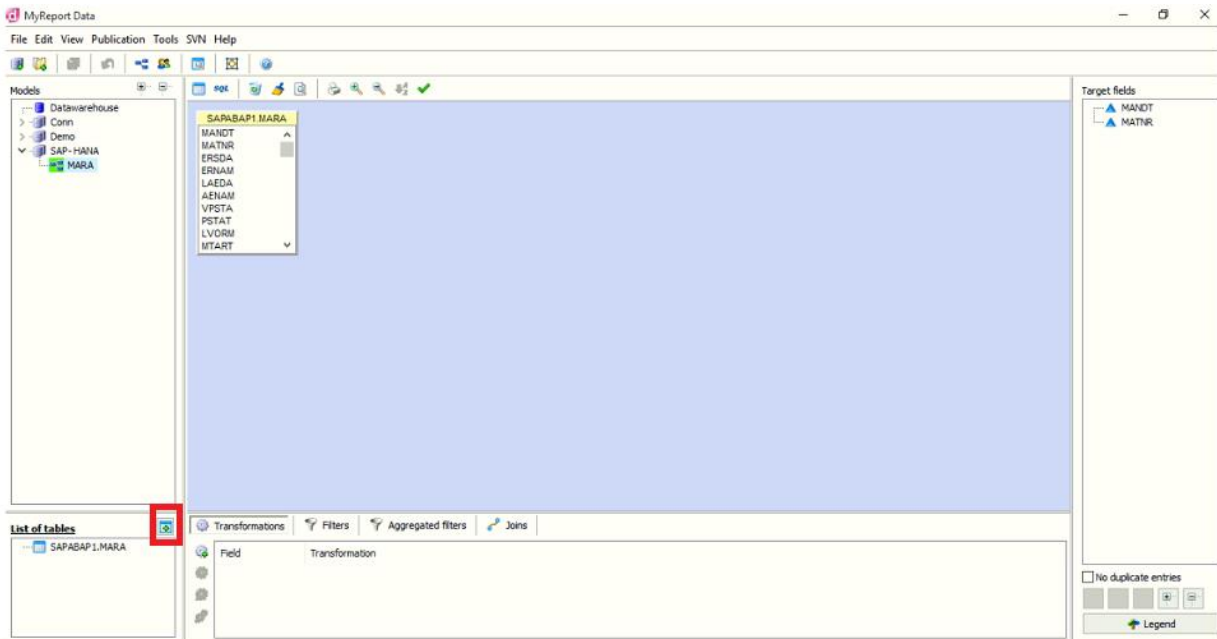
#### 4) Enter Server Address, User Name & Password -Click ok



#### 5) MyReport Data – ODBC(ADO) -Select HSBODBC32 -Enter Credentials. - Test the connection



6) Click on  to add table name with schema name e.g.SAPABAP1.MARA



7) Drag fields into Target section e. g. MANDT, MATNR & click on Query Data. Values will be displayed.

