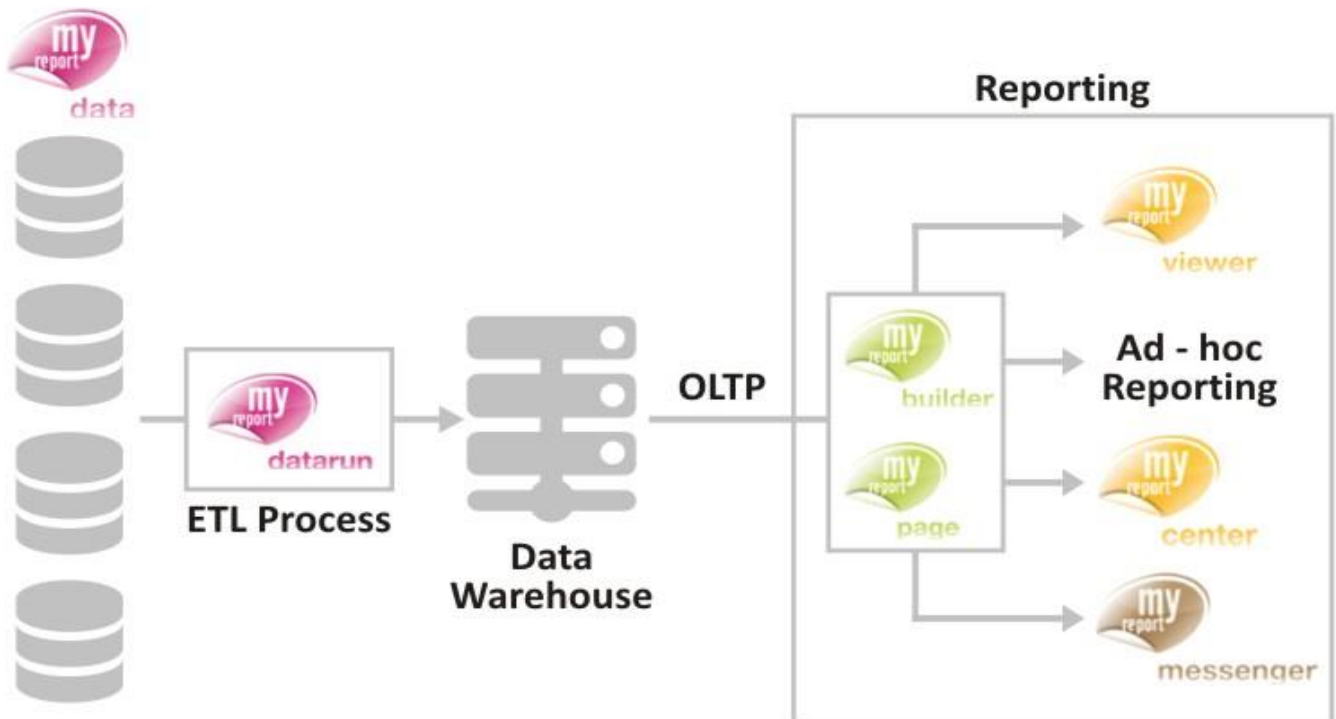




Training Manual

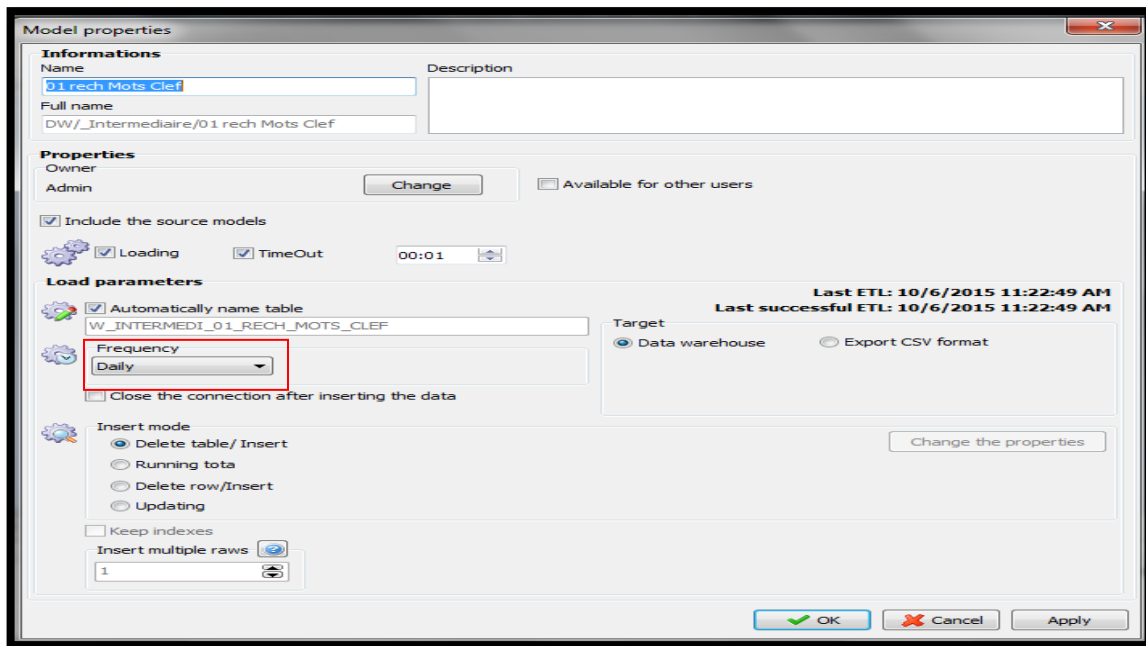
MyReport DataRun



ETL: - (Extract, Transform, Load)

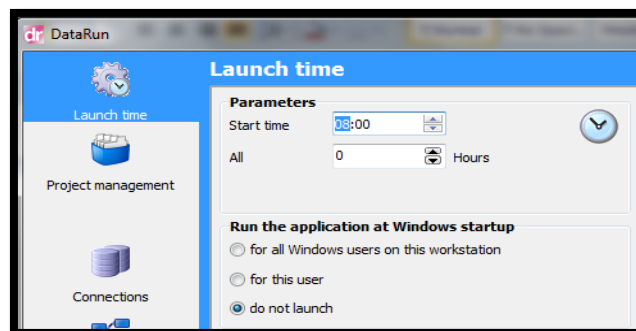
Automatic scheduling

For automatic scheduling of the model user needs to set the frequency for that model, in the model properties in MyReport Data.



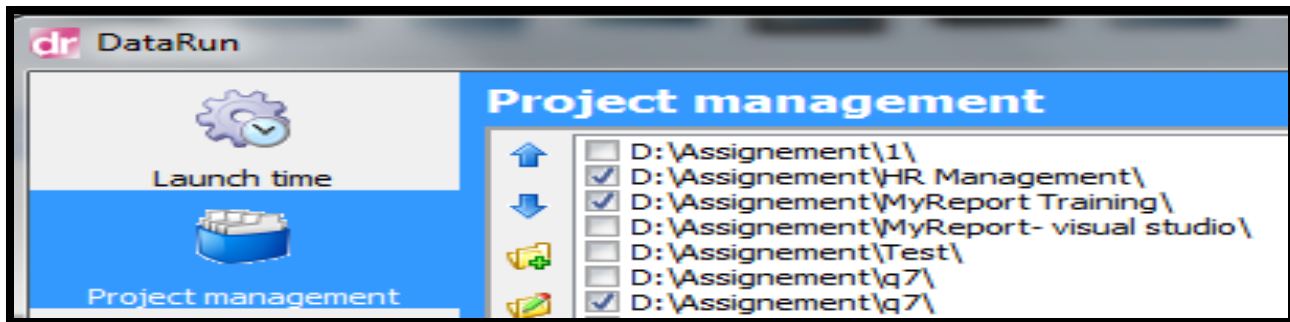
Launch Time: Select Launch time for ETL.

Parameters: Select start time for model ETL.



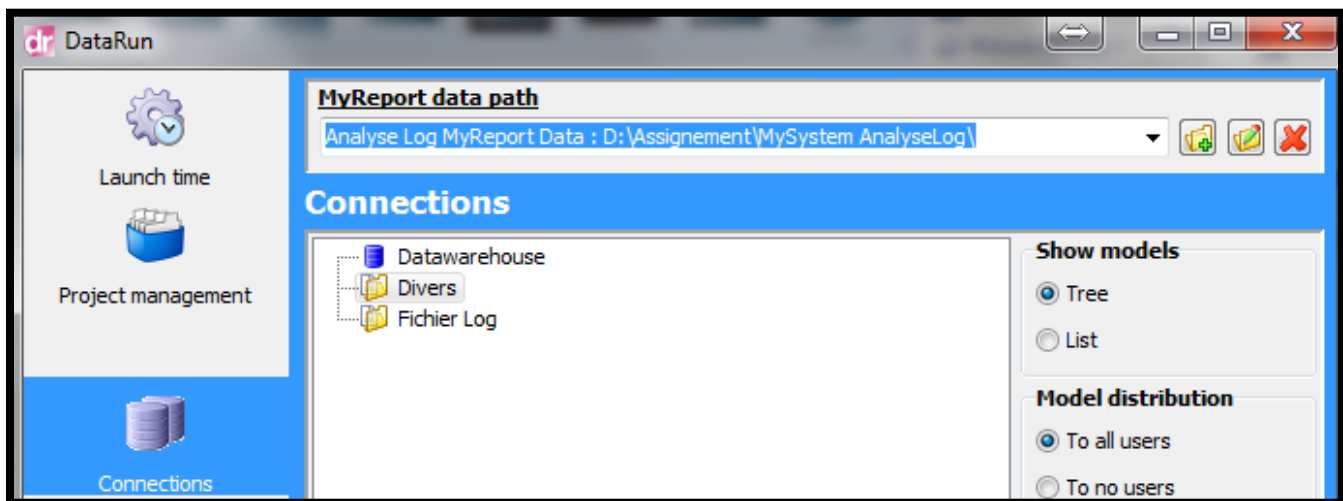
Project Management:

To schedule an automatic ETL user needs to select project in project management.



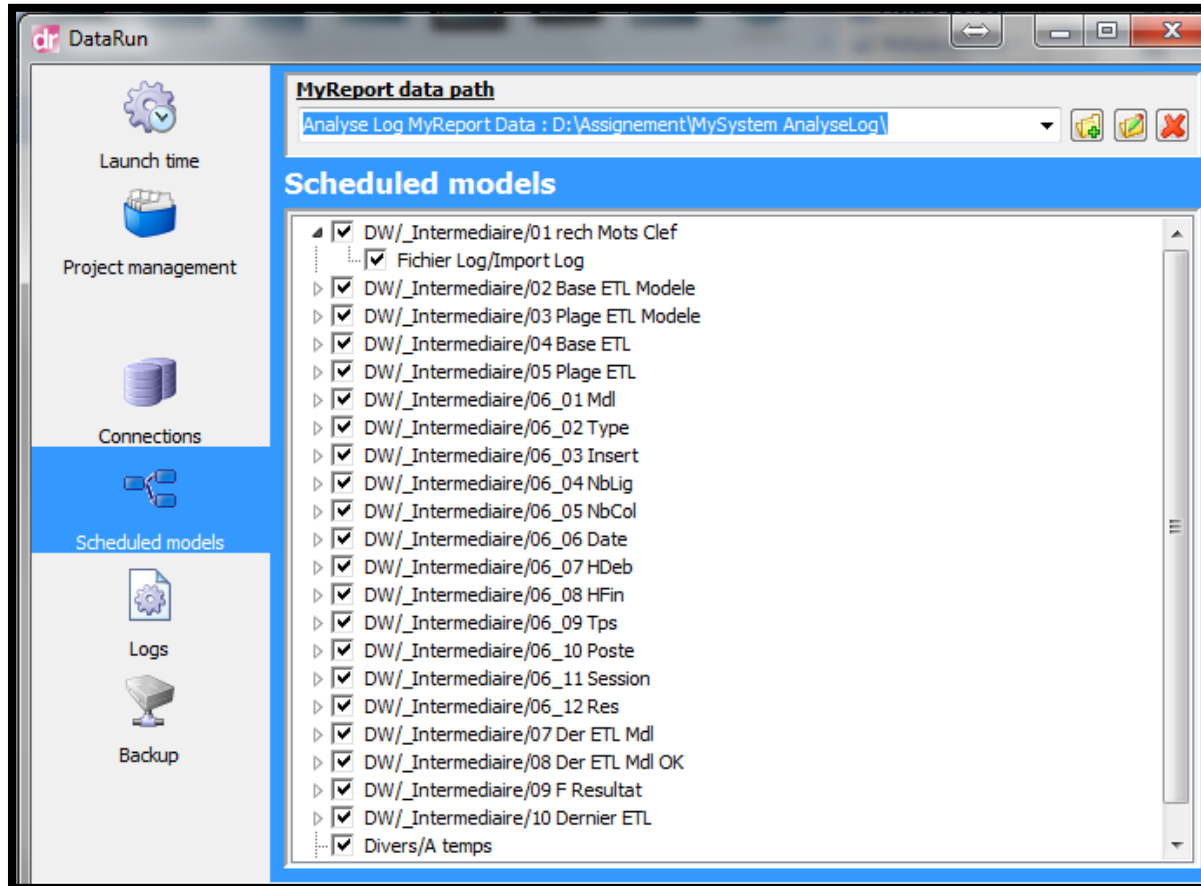
Connections:

User can see all the Connections, which user has made for that project



Scheduled models:

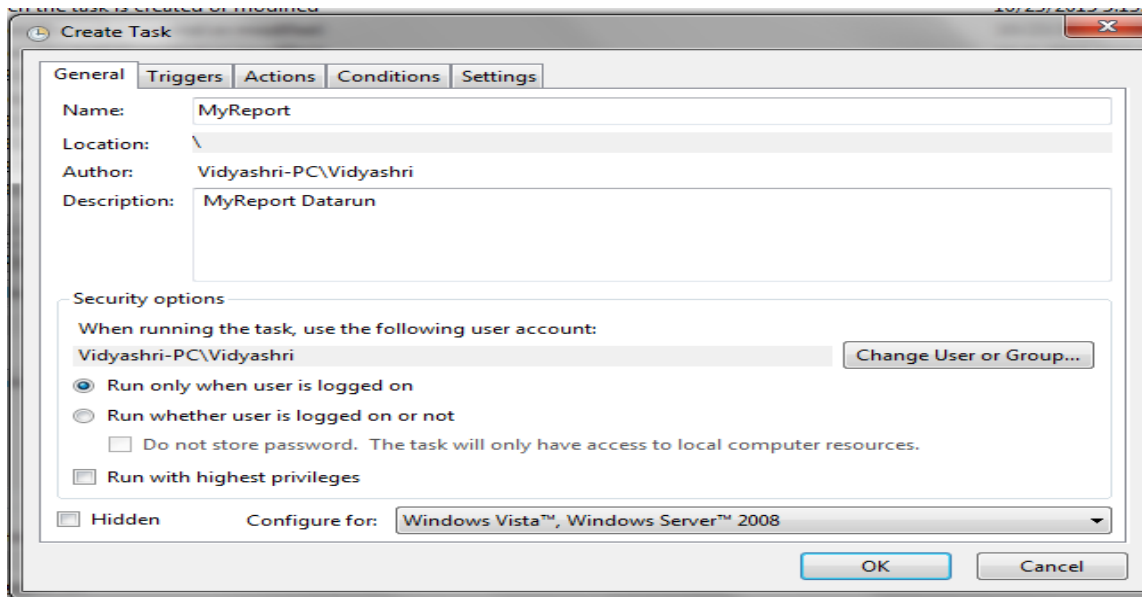
In this section, all the models will be visible for which user had set the frequency in MyReport Data.



Auto scheduling

There is one more way, user can set automatic ETL with the help Task scheduler.

- i) Create Task in Task Scheduler
- ii) In General Tab provide its name.
- iii) In Triggers Tab provide the time.
- iv) And in Actions provide the Datarunwin5.exe from the following path
- v) **“C:/program files/ (86)/Report One/ MyReport/”**



Exercise

- | | |
|---------------------------------------|--------|
| 1) Create a task in Task Scheduler. | 10 Min |
| 2) Schedule an automatic ETL at 4 pm. | 10 Min |
| 3) Take Project back up | 5 Min |

Questions

1. What is the function of MyReport Datarun?
2. What is the first step before starting ETL scheduling in MyReport Datarun?
3. How to add project in MyReport Datarun?
4. How to schedule project for ETL in MyReport Datarun?
5. What is another way of Automatic ETL than MyReport Datarun?
6. How to create task in Task Scheduler?
7. How to take Project back up from MyReport Datarun?
8. What is connection tab in MyReport Datarun?
9. What is schedule model tab in MyReport Datarun?
10. How to use MyReport Datarun and windows Task Scheduler together for auto scheduling?